

Primer painted Hot-dip zinc coated

Primer painted

Primer painted industry preferred finish products are coated with our exclusive waterborne primer paint systems. Target of average coating thickness is 15micro,has rust simple prevention, but no warranted.

Hollow structural section

Correspond Specifications		
Color	Red,Gray	
Reference standard	ASTM A500	Grade B,Grade C
	EN 10219	S275J0H S355J0H S355J2H
AS 1163	C350,C350L0 C450,C450L0	
	JIS G 3466	STKR400 STKR490
Approved by MLIT of Japan	BCR 295	
Dimension (mm)	Square	1.6 x 50 x 50 ~ 6.0 x 175 x 175
	Rectangular	1.6 x 50 x 30 ~ 6.0 x 200 x 150
Length	5.5m~12m	

Light gauge section

Specifications		
Color	Red,Gray	
Reference standard	JIS G 3350	SSC400
Dimension (mm)	Ligth Gauge Channel Section	100 x 50 ,100 x 40, 80 x 40 60 x 30, 40 x 40, 40 x 20
	Lip Channel Section	150 x 50 x 20 125 x 50 x 20 75 x 45 x 15 30 x 30 x 10
Length	5.5m~12m	

Hot-dip zinc coated

HSS and LGS produced by hot-dip zinc coated steel sheet has highly corrosion-resistant. Not only rust resistant on flat surfaces but also highly rust resistant on cut-end surfaces. In addition,extremely high alkaline resistance strongly resistant to rust at bends and in cylindrically-drawn sections fine finishes with fewer scratches after fabrication.

Hollow structural section

Correspond Specifications		
Hot-dip zinc coated ¹⁾	Zinc 120kg/m ² Zinc 275kg/m ²	
Reference standard	ASTM A500	Grade B,Grade C
	JIS G 3466	STKR400,STKR490
Dimension (mm)	Square	50 x 50 x 1.6 ~ 50 x 50 x 3.2 60 x 60 x 1.6 ~ 60 x 60 x 3.2 75 x 75 x 2.3 ~ 75 x 75 x 4.5 100 x 100 x 2.3 ~ 100 x 100 x 9.0 125 x 125 x 3.2 ~ 125 x 125 x 6.0
	Rectangular	60 x 30 x 1.6 ~ 60 x 30 x 3.2 75 x 45 x 1.6 ~ 75 x 45 x 3.2 100 x 50 x 2.3 ~ 100 x 50 x 4.5 125 x 75 x 2.3 ~ 125 x 75 x 9.0 150 x 100 x 3.2 ~ 150 x 100 x 6.0
Length	5.5m~12m	

Light gauge section

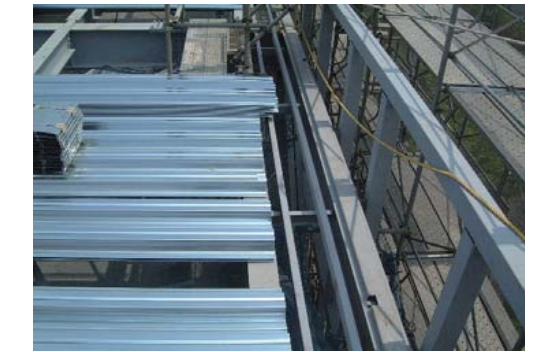
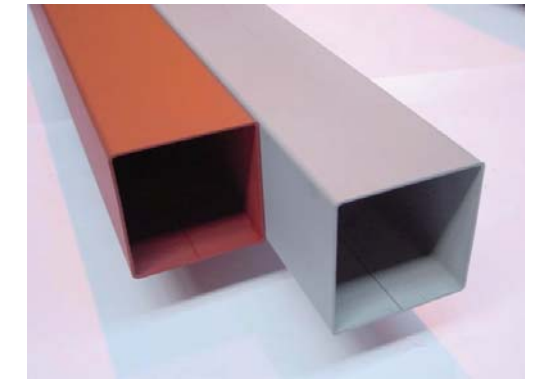
Specifications		
Hot-dip zinc coated ¹⁾	Zinc 120kg/m ² Zinc 275kg/m ²	
Reference standard	JIS G 3350	SSC400
Dimension (mm)	Ligth Gauge Channel Section	100 x 50 ,100 x 40, 80 x 40 60 x 30, 40 x 40, 40 x 20
	HxAxC Lip Channel Section	150 x 50 x 20 125 x 50 x 20 75 x 45 x 15 30 x 30 x 10
Length	5.5m~12m	

NOTE
1)total mass on both surface.

If you need additional requirements, please consult us.

Application

Primer painted



Hot-dip zinc coated



- Wall rails of plants and warehouses (in the areas of salt damage)
- Purlins and floor joists of long life house etc.

